

2013
Annual Report

FIGHTING POVERTY Building Hope



CANI *Fighting Poverty.
Building Hope.*
COMMUNITY ACTION OF NORTHEAST INDIANA

2013 Annual Report

CANI Mission

CANI helps communities, families, and individuals remove the causes and conditions of poverty.

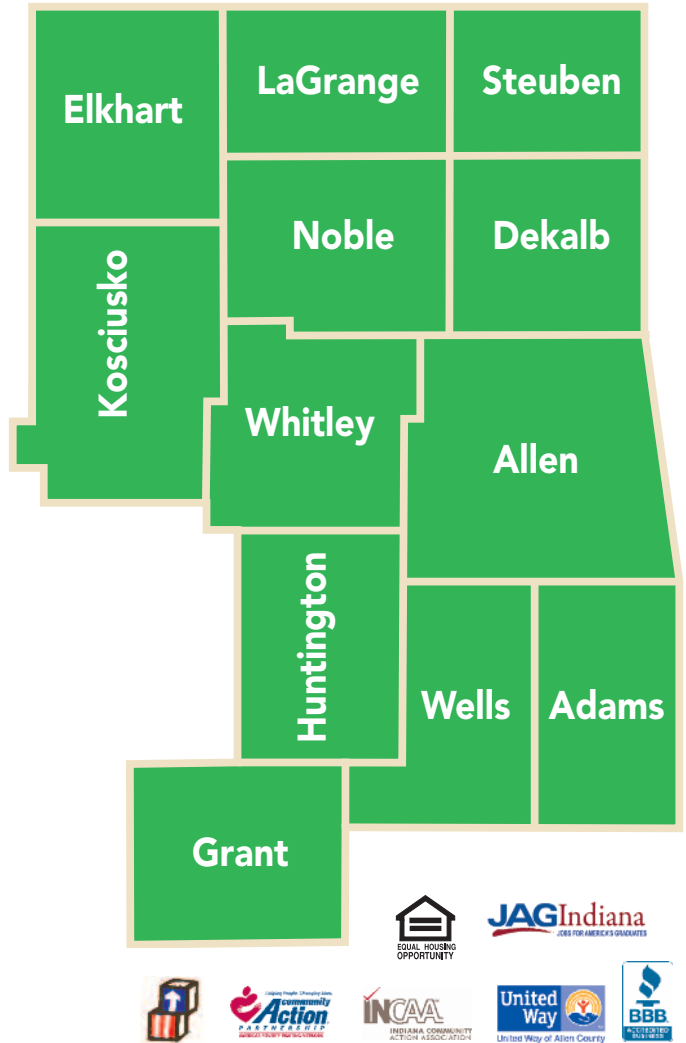
As I reflect on 2013, I am struck by how diligently our staff and volunteers have worked to help people in our community. The demand for services grew last year, in spite of budget reductions in several of our programs. This makes our work more difficult, but those that work and volunteer here at CANI continue to make amazing things happen every day. We are proud of the fact that we work with people of all ages, from infants, to youth and young families, and senior citizens building toward self-sufficiency. We are proud to work with families in so many different areas, such as housing, child development, employment, utilities, and financial management. We are always seeking new ways to help our community. One example of this was that we became a certified SBA micro-lender and Community Development Financial Institution in 2013. These designations allow us to expand the amount of capital we bring into our communities for housing and business development. In the end, it was another extremely busy year for us.



Steve Hoffman

CANI Service Area

Community Action of Northeast Indiana



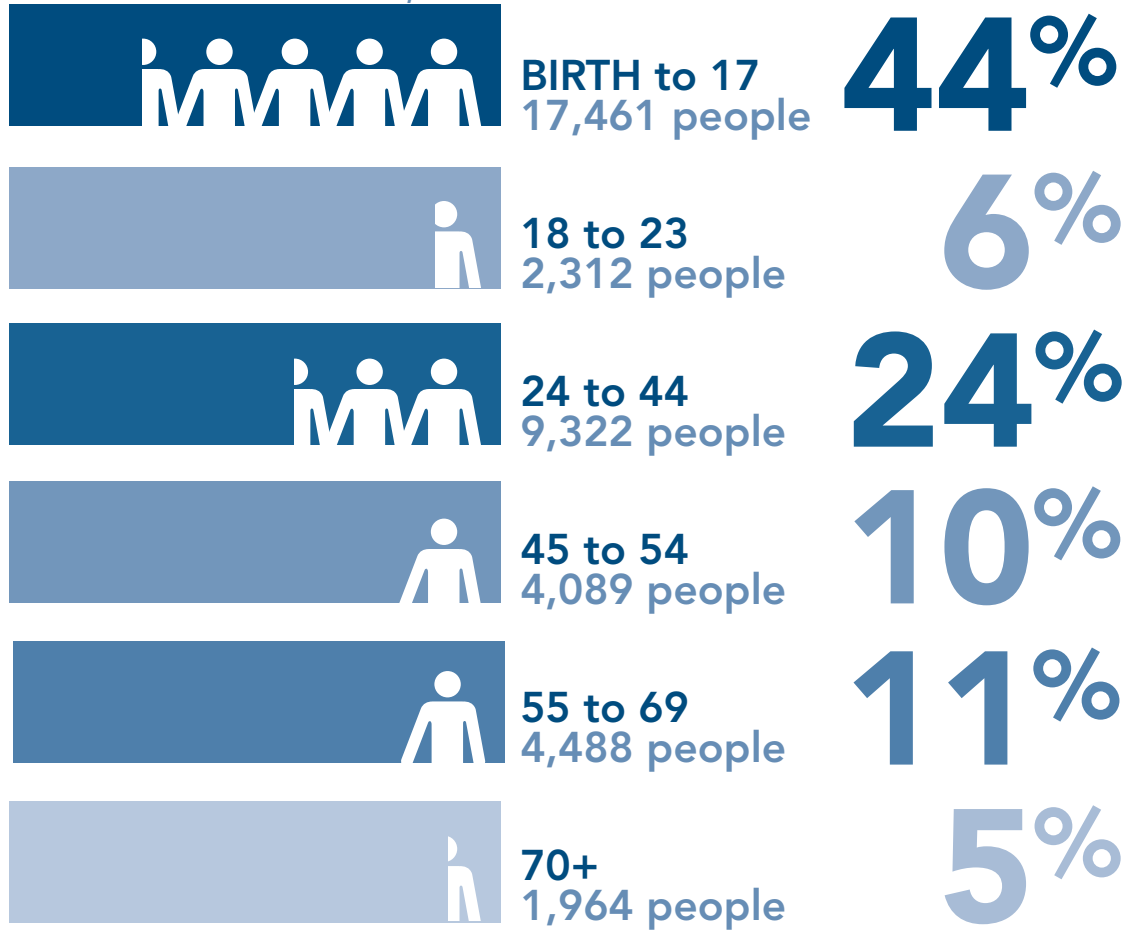
CANI Board of Directors

- Dawn Gallaway, Madeleine Baker,
- Michael O'Keefe, Karma Austin,
- Peter Adams, Susan Berghoff,
- Jay Brown, Laura Dwire
- Todd Fleetwood, Kathy Heuer,
- Greg Johnson, Gina Kostoff,
- Karl Kostoff, Josh Neal
- Kelly Pautler, Maynard Scales
- Jaci Worrick, Misty Zent

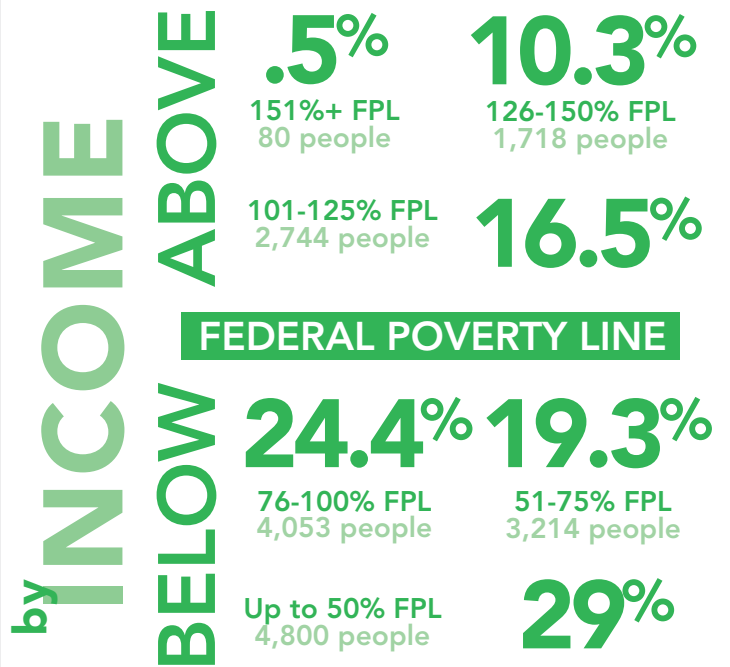
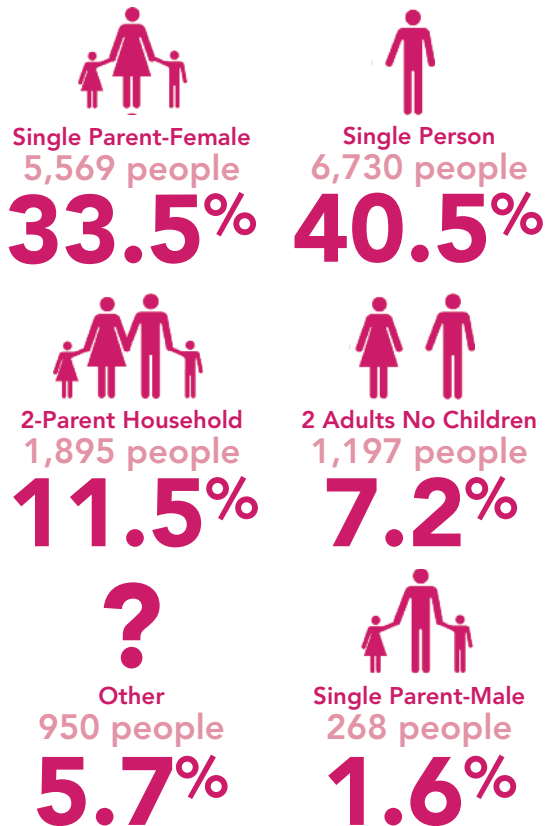


TOTAL SERVED IN 2013: 39,636

WE HELP BY AGE



WE HELP BY FAMILY TYPE



as a percentage of the Federal Poverty Line (FPL)
(100% of the FPL for a family of four was \$23,850)

CANI increases access to opportunities that help people become more economically stable while working toward self-sufficiency. The Family Stability programs that CANI offers provide access to affordable health-care, help paying utility bills, and assistance obtaining safe and affordable housing. We know that taking care of the conditions of poverty is important while working toward long-range goals.

Covering Kids & Families

CANI is a member of Covering Kids & Families of Indiana Inc. (CKF-IN), a statewide organization committed to ensuring that all children and families eligible for Medicaid, Hoosier Healthwise, the Healthy Indiana Plan (HIP), and Presumptive Eligibility Programs are enrolled. These healthcare programs provide medical care for families when they are struggling and need it most.

Ales and Renata Pancner, Fort Wayne, IN

Ales and Renata Pancner tried getting medical coverage for their adopted daughter with autism two years ago, but were unsuccessful until they met with a Covering Kids & Families outreach coordinator. After helping them with the application process, their daughter was eventually approved for Hoosier Healthwise. Ales and Renata were also able to receive assistance with Marketplace health insurance. "Since we are immigrants in this country - we went through many government agencies before but never encountered anybody as nice as our outreach coordinator...Such a huge asset for our community!"



Energy Assistance

The Energy Assistance Program (EAP) helps pay a portion of a participant's winter heating bills. Summer Cooling also provides air conditioners or utility bill credits in summer months, depending on a family's situation.



2013 Impact

Covering Kids & Families

- 1,324 households obtained health insurance
- 6 staff members assisted families in Allen, DeKalb, Elkhart, Kosciusko, LaGrange, Steuben, Noble, and Whitley counties

Energy Assistance

- 9,698 families received help with their utility bills - either reconnecting services or preventing disconnect
- 91% of the families seeking utility assistance received help
- \$5,266,112 in benefit dollars
- 18 staff (CANI staff working in the Energy Assistance Program also serve as Child Care Assistance staff)
- Served families in Allen, DeKalb, LaGrange, Noble, Steuben, and Whitley counties

2013 Impact

Housing Choice Vouchers


- 144 families were provided safe and affordable housing
- 50% of clients maintained stable housing for 12+ months
- 25% of the families leaving the program had achieved self-sufficiency and no longer needed the assistance
- 3 staff (also work with Shelter Plus Care)
- Served families in Allen (outside Fort Wayne city limits), DeKalb, LaGrange, Noble, Steuben, and Whitley counties

Permanent Supportive Housing

- 70% of those seeking safe and affordable housing were able to obtain it
- 38 families received assistance
- 50% of the participants maintained stable housing for 24+ months
- 3 staff assist families in Allen, DeKalb, LaGrange, Noble, Steuben, and Whitley counties

Housing Choice Vouchers

The Housing Choice Voucher Program helps pay a portion of a family's rent. Families can live in safe housing they could not otherwise afford.



Alicia Shipe, Auburn, IN
 Due to legal and financial problems, Alicia Shipe and her family were evicted from a house they were attempting to buy on land contract in Auburn. She became homeless and lived out of her car while her children stayed with grandparents. After a referral to the Permanent Supportive Housing program, Alicia and her family were approved for housing. Once she settled into their new home, she continued nursing studies at the University of St. Francis, and in December, 2013, she completed her Associate's degree. Alicia now works at Dupont Hospital in Fort Wayne.

144 Families

received monthly housing assistance in order to maintain safe and decent housing.

(This figure includes Permanent Supportive Housing & Housing Choice Voucher Program participants.)

Permanent Supportive Housing

Permanent Supportive Housing vouchers help pay a portion of individual's or family's rent. These vouchers are designed for those who are homeless and: seriously mentally ill, recovering from drug or alcohol abuse and/or HIV-positive. Individuals must currently be in treatment with a partner agency for one of the three diagnoses.

Self-sufficiency means that a family can provide all their needs without the assistance of individuals, organizations, or the government. CANI has a mix of programs that aim to bring families from poverty to economic independence. These programs help families with child care costs, setting and reaching goals, and moving them from homelessness to stable housing

Family Development

Family Development is a home visitation program that helps families move from poverty to self-sufficiency. CANI staff help families use their strengths to set and accomplish goals.

The following programs are designed to help families achieve housing stability:

The Emergency Solutions Grant provides funding to serve residents of Allen County who are living in a homeless shelter or on the street, or who are homeless because they are fleeing domestic violence. Qualifying households are provided financial assistance such as rent, utilities, and deposits. They are also given help identifying safe and affordable housing options. Family Development Workers assist the families for 12-18 months to help ensure that they gain a strong footing for long-term housing stability.

The Supportive Services for Veteran Families (SSVF) program was a new addition to CANI in 2012. SSVF is designed to assist Veterans who are homeless, at risk of being homeless, or are facing issues securing stable housing arrangements. Along with rental assistance, security and utility deposits, and help with other housing-related expenses, the program allows CANI staff to assist Veterans in obtaining VA benefits such as vocational and rehabilitation counseling, employment and training services, and education benefits.

2013 Impact

Family Development

- 51% of initial goals set by families in the program were achieved
- 86.3% of the families that entered the program with a housing crisis moved to stable housing
- 81.2% of those employed were able to obtain an increase in income or benefits
- 7 staff served clients in Allen, DeKalb, LaGrange, Steuben, Noble, and Whitley counties
- 185 participants served through the Emergency Solutions Grants and SSVF programs
- SSVF program also serves residents of Adams, Blackford, Cass, Delaware, Elkhart, Fulton, Grant, Henry, Howard, Huntington, Jay, Kosciusko, Madison, Marshall, Miami, Pulaski, Randolph, St. Joseph, Tipton, Wabash, and Wells counties

Robert Kanippe, Peru, IN

After answering an ad in the newspaper about the Support Services for Veteran Families (SSVF) program, Robert didn't realize how much his life was going to change. Robert proudly served in the military and then worked in construction for 20 years, but his health interfered with both career paths. Unsteady income made life difficult, but after entering a job training program, Robert obtained computer skills and now works as a receptionist. Even with a prostate cancer diagnosis two years ago, it hasn't slowed him down. After meeting with the SSVF Homeless Prevention Coordinator, he moved into his new home. Weeks later he was approved for Social Security benefits and learned his cancer was in remission. "I am going to get it right this time. If I were any happier there would be two of me!"

2013 Impact

Child Care Assistance

- 4,338 children were provided quality child care in order for a parent to get or keep a job, and/or go to school
- At the end of 2013, we were at 100% capacity with 4,527 in child care and 630 children on the waiting list
- 12% of parents receiving child care assistance are in school
- 88% of parents receiving child care assistance are employed
- 18 staff (CANI staff working in Child Care Assistance also serve as Energy Assistance Program staff) served participants in Allen, DeKalb, Elkhart, Kosciusko, LaGrange, Noble, Steuben, and Whitley counties

Child Care Assistance

The Child Care Assistance Program helps families with children younger than 13 afford quality child care. Parents must be working, going to school and/or receiving job training to qualify.

Weatherization

Weatherization reduces energy costs for families by making a home more fuel efficient, lowering fuel usage, and making homes more comfortable and safe. Weatherization work is performed on single-family homes, multi-family dwellings, and mobile homes.

Mary Nellers, Shipshewana, IN

Mary Nellers, the owner-occupant of a mobile home northwest of Shipshewana had been collecting cast-off building materials to fix up her trailer, but despite her efforts, there was "just too much to do and not enough money to do it with." When her furnace's pilot light kept blowing out, a concerned neighbor gave her a wood burning stove and installed a venting system for Nellers. Despite his gesture, this was a critical fire and safety hazard. After the Weatherization crew inspected Mary's trailer, they also discovered it had serious plumbing and electrical issues. Mary's trailer needed a lot of work, but the team came together and addressed her plumbing and electrical issues, as well as repaired leaky duct work and installed a new furnace system.



2013 Impact

Weatherization

- 214 families lived in safer and more energy-efficient homes
- 214 housing units achieved an increase in safety features and energy efficiency
- 61 furnaces were replaced and 153 repaired
- 6 Weatherization staff provided services in Allen, DeKalb, LaGrange, Steuben, Noble and Whitley counties

Mission Statement

CANI Head Start/EHS collaborates with families and community partners to achieve positive outcomes for children and families beyond Head Start/EHS.

Program Goals

Early Head Start (EHS) recognizes parents as their children’s first and most important teachers. One of the most important goals of this program is to give parents the information they need to empower them to embrace that role. Early Head Start staff also encourages families to become an advocate for themselves and their children, access appropriate health care services, and become involved in their community.

To accomplish these goals, Early Head Start provides:

- Weekly home visits
- Prenatal health education
- Child development education
- Parenting skills building
- Family goal setting
- Self-sufficiency and family functioning education
- Medical services and health education
- Dental services and dental education
- Mental Health services
- Nutrition education
- Family partnerships
- Parent involvement

Revenues/Expenditures

Revenue

US Dept of Health & Human Services (HHS)	\$818,817
Total	\$818,817

Expenditures

US Dept of Health & Human Services (HHS)	\$818,817
Total	\$818,817

These reported expenditures and revenue were in our 2012-2013 budget and supported our goals and objectives. Figures are based on the period from 11/1/2012 to 10/31/2013.

2012-2013 Impact

Enrollment

- CANI Early Head Start serves 72 infants, toddlers, and pregnant women in Allen, Noble, Whitley counties at any one time

The breakdown by caseload is as follows:

Allen

- 41 enrollees for 4 home visitors.
- 11 enrollees for 1 Burmese-speaking home visitor

Noble

- 10 enrollees for 1 Spanish-speaking home visitor

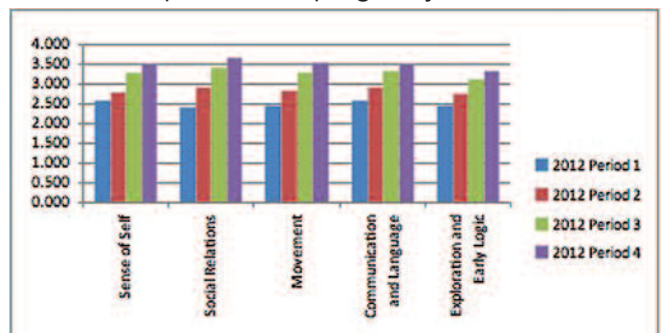
Whitley

- 10 enrollees for 1 home visitor

- CANI EHS served 97 children and 9 pregnant mothers of the 8,317 eligible children in our service area through 10/31/2013. We had an average of 45 children on the waiting list each month.

School Readiness Outcomes Data

EHS School Readiness goals are based on the High/Scope Child Observation Record (COR) which is an on-going child assessment process. Data is collected four times throughout the program year and analyzed to enhance programming. The assessment goes from a level one to a level five and the graphs included show infants and toddlers progress over the four assessment periods and program year 2012—2013.



Medical and Dental Care

Medical services for infants and toddlers is particularly challenging due to the monthly changing scope of needs. They don't just visit the doctor and then they are done for the year. Because of that, the figures below represent the range of percentages of completion in each area for enrollees throughout the program year:

Physical current: ranged from a monthly low of 79% completed to a high of 93%

Immunizations current: ranged from a monthly low of 86% up-to-date to a high of 94%

Lead screening complete: ranged from a monthly low of 82% completed to a high of 94%

Hemaglobin screen: ranged from a monthly low of 85% completed to a high of 94%

Dental: ranged from a monthly low of 78% completed to a high of 99%

The Health Coordinator also provides families with information about health topics including tooth brushing, nutrition and home safety.

CANI EHS contracts with nutrition and mental health professionals to ensure that families have access to all the services they need to enable their families to be healthy.



"Early Head Start is amazing and so helpful. My kids love the play dates and all the crafts and activities."

-Early Head Start participant

Head Start Mission Statement

CANI Head Start/EHS collaborate with families and community partners to achieve positive outcomes for children and families beyond Head Start/EHS.

Transitions

Quality early childhood education services are enhanced through partnerships with the United Way of Allen County and Fort Wayne Community Schools. Families share specific progress and assessment information with their child's kindergarten teacher. In addition, "Off to a Good Start" sessions are available to parents to help them prepare for their child's transition to kindergarten.



Program Goals

A major goal of the Head Start Program is to bring about a greater degree of social competence in children. Social competence means the children's everyday effectiveness in dealing with both the present environment and later responsibilities in school life. Social competence takes into account the child's cognitive, emotional and physical needs.

To accomplish this goal, our program provides:

- Educational services for children and their families
- Medical services and health education
- Dental services and dental education
- Mental Health services
- Nutrition services and nutrition education
- Family partnerships
- Parent involvement

Education

At CANI Head Start, we believe children construct knowledge (learn) through a wide variety of rich meaningful experiences with adults, peers (other children), and materials. We believe that parents are the first and primary teachers of their children. Therefore, parent involvement is vital in every aspect of our efforts to enrich each child's life. We believe each child and family is unique. By serving the whole family, we are enriching the child's life as well as developing a positive self-image for the family as a whole.

We help children:

- Become confident learners
- Develop their bodies
- Become socially competent
- Develop a healthy emotional outlook



2012-2013 Impact

Enrollment

CANI Head Start serves families in Allen, Noble and Whitley counties

- 1,568 Applications Received
- 881 Eligible Children Served
- 703 Funded Enrollment
- 703 Average Monthly Enrollment

Allen County Sites:

- Hanna-Creighton: 136 children part day plus 36 children full-day/full-year
- St. Henry's Catholic Church: 102 children
- Grace St. John's Church of Christ: 84 children
- Salvation Army: 152 children
- Achduth Vesholm Temple: 82 children

Noble County Sites:

- First Presbyterian Church, Kendallville: 34 children, plus 10 children in Bowen Center staffed classroom
- Ligonier United Methodist Church: 34 children

Whitley County Site:

- Columbia City: 33 children

CANI Head Start served 881 children or 10.5% of the 8,317 eligible children in our service area. This is down 2.5 percentage points from the previous year

The percentage of children served can only be increased when program expansion is offered by the Department of Health and Human Services. The CANI Head Start enrollment slots are consistently filled at 100 percent.

CANI Head Start Outcomes for 2012-2013 Program Year

CANI Head Start uses the High/Scope Curriculum and the High/Scope Child Observation Record (COR) to gather on-going assessment data for pre, mid and post assessment periods. The following are “areas of focus” for the 2013—2014 program year determined from the data collected:

- Language/Literacy
- Math
- Social/Emotional Development
- Science

Some, but not all of the activities to be implemented according to the individual areas are:

Language/Literacy:

- Plan/implement one language/literacy-focused “Small Group Time” on a weekly basis.
- Read a minimum of 3 books aloud to children every day in each classroom.

Math:

- Focus on one shape each month as a “Shape of the Month”.
- Implement daily graphing in the classroom.

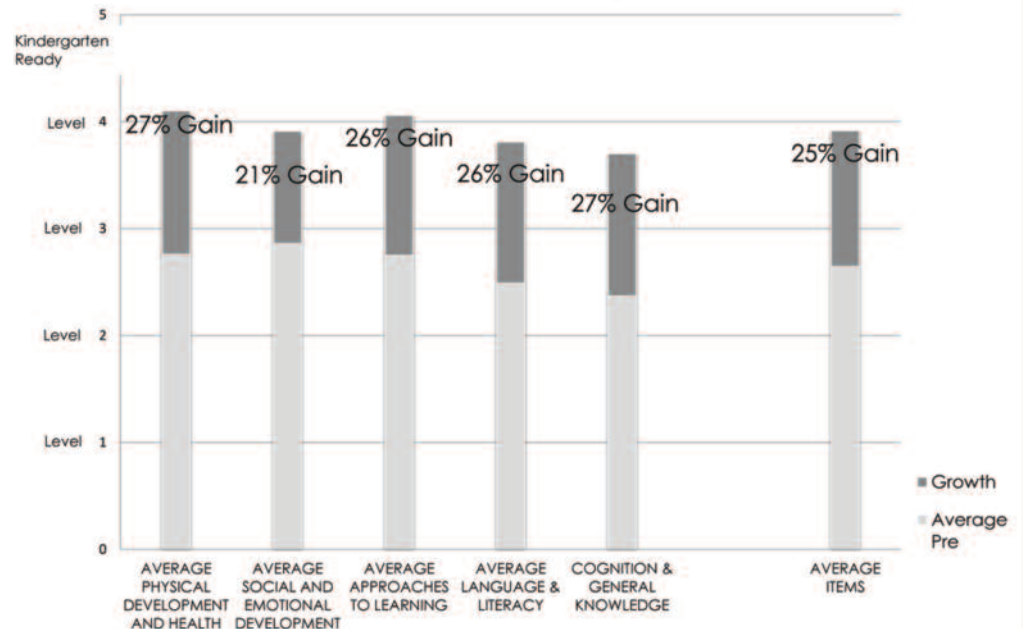
Social/Emotional Development:

- Intentionally use photos of Head Start children in the classroom.
- Use music in the classroom daily.

Science:

- Plan/implement on “Small Group Time” on science weekly.

CANI Head Start 2012/2013 Program Outcomes



Parent, Family and Community Engagement (PFCE) Framework

The PFCE committee continued to meet over the last year and the following goals were established:

1. To revise the HS mission statement to reflect PFCE.
2. Create a PFCE Vision Statement (one-two lines)
3. Develop a data analysis system to analyze progress in Family Outcomes.
4. Provide training to all staff on building effective relationships with families.
5. Create a blueprint of how the child outcome data is shared.
6. Develop a process to collect and analyze data about community services to identify the most effective services as well as service gaps.

The Committee created the Head Start mission and vision statements. They were approved by Policy Council in February 2014. A Head Start/EHS all staff training was presented by the committee in January 2014.

Family Services

The CANI Head Start Family Services Department recruits and assists families in enrolling their children into the Head Start program. After enrollment, the department staff members stay informed of community resources and work with families to:

- Alleviate obstacles to their child’s education
- Develop personal and professional goals
- Build upon self-advocacy skills
- Access community resources
- Process and work through crisis situations
- Develop skills through parent involvement opportunities

Revenues/Expenditures

Revenues Fiscal Year 2013

US Dept of Health & Human Services	\$5,207,439
USDA (CACFP)	\$311,157
Child Care Development Fund (parent co-pay and voucher revenue)	\$180,399
Total	\$5,698,995

Expenditures Fiscal Year 2013

US Dept of Health & Human Services	\$5,207,439
USDA (CACFP)	\$311,157
Child Care Development Fund (parent co-pay and voucher revenue)	\$180,399
Total	\$5,698,995

These reported revenues and expenditures were in line with our 2012-2013 budget and supported our goals and objectives. Figures are based on the period from 11/1/2012 to 10/31/2013. Child Care Vouchers are included as revenue/expenditures because two classrooms in the Hanna-Creighton site operate as full-day/full-year programs. We proposed a budget and we are held to that budget. The fiscal year is November 1 through October 31 each year. We will propose the budget for Fiscal Year 2015 by July 2014.

Medical and Dental Care

CANI Head Start partners with families long term to ensure proper preventative medical and dental care takes place. The Health Coordinator, a registered nurse, works with Family Advocates to ensure children are on schedule with immunizations and current with physical exams. Families are encouraged to use family physicians and dentists as much as possible. The Health Coordinator facilitates vision and hearing screenings and provides parents with information and resources about relevant health topics such as: proper hygiene, dental care, nutrition, and poison prevention.

Of the 881* Children enrolled in CANI Head Start:
856 Physicals Completed (97%) 861 Dental Screenings Completed (98%)
*29 children withdrew before deadline for physical and dental screens.

Quality

Results of the Most Recent Audit

The most recent audit for the period November 1, 2012 through October 31, 2013 has been completed but the report had not been made available yet. There were no Head Start/EHS findings. The last Audit for Community Action of Northeast Indiana, Inc. for the period of November 1, 2011 through October 31, 2012 was completed and accepted on April 11, 2013. Both Head Start and Early Head Start were audited at this time and there were no findings with either program.

Results of the Most Recent Monitoring Review

The Most Recent Monitoring Review of the Head Start and Early Head Start Programs was conducted in October, 2012. One area of non-compliance was cited in Human Resources. Of 67 files sampled, one file from the delegate, East Wayne Street Head Start, was found to have a criminal history that was completed after the individual was hired. A procedure is now in place so that this will not occur in the future.



Youth

Part of CANI's long-term strategy is to work with youth as they transition into adulthood. The Jobs for America's Graduates (JAG) program is a school-to-career program implemented in 1,000 high schools, alternative schools, community colleges, and middle schools across the country. JAG's mission is to keep young people in school through graduation and provide work-based learning experiences that will lead to career advancement opportunities or enrollment in a post-secondary institution that leads to a rewarding career.



Danielle Kemerly, Garrett High School, Garrett, IN

"JAG has given me the opportunity to compete and participate in so many different things that I have never done or been asked to do before! I am so thankful for that!"

Jeremy Wogoman, Garrett High School, Garrett, IN

"If it weren't for this class I never would have considered going to college. After taking this class I want to do better in school, and go to college. I also have stopped doing a lot of the dumb things I used to do after school."

2013 Impact

Youth

- 302 students in Jobs for America's Graduates program.
- 13 Schools participated including 5 new schools
- 3 YIDA in the follow-up stage
- 15 staff provide services located in Allen, DeKalb, Grant, Huntington, and Noble counties.



Emari Carroll
(Marion High School)
with Commissioner Scott Sanders of the Indiana Department of Workforce Development

CANI's Center for Community and Economic Development is involved with small business financing, business development, financial education, consumer finance services, and housing development.

Financial Planning

Small business loans are available for aspiring individuals who are looking to rebuild their credit and are planning to start or expand a business. A business plan is required to participate.

The consumer loan program allows CANI to assist participants in working to improve their credit score. The program emphasizes dealing with old credit issues and establishing new good lines of credit to positively impact a person's credit score.

IDAs (Individual Development Accounts) are savings accounts that are matched 3 to 1 for every dollar the account holder saves. Funds can be used: to buy or repair a home; pursue higher education or job certification; or to start a small business.

Financial education is offered for people who are looking to rebuild or establish credit, want to buy a home, or just want to manage their money better.

Foundations is a business planning course for individuals who want to start or expand their own business. The course provides basic tools, information, access to financing, and support groups to help achieve that goal. For a small fee, participants attend a 3 hour session weekly for 6 weeks total. Each session focuses on the different aspects of starting a business. At the conclusion of the workshop, participants present detailed business plans that they have formulated over the course of the two-month Foundations class.

Tammi McKee, Fort Wayne, IN

Tammi's small business adventure started after she left the Allen County Assessor's office. Everyone had always liked her cooking, so she began catering and eventually shared kitchen space with another local caterer. When Tammi learned of the opportunity to bid on running the cafeteria space at the Rousseau Centre in downtown Fort Wayne, she placed her bid and won. She quickly applied to the small business loan program at CANI to help with operational costs, and was approved. On January 7, 2013, Comfort Food Café opened featuring a few menu staples as well as daily features. This allows her to be creative and try new recipes. "If you put good food out, people are going to come back."

2013 Impact

Financial Planning

- Funded 12 small business loans for a total of \$77,920.94
- Funded 11 consumer loans for a total of \$13,300
- 136 participants went through Financial Literacy classes
- 18 business people successfully completed the Foundation class
- 3 staff (who work on all Community Investment initiatives)



AmeriCorps

CANI Corps is a national AmeriCorps program facilitated by CANI. Members serve 10 1/2 months with CANI or partner agency Lutheran Social Services (LSSI). The members receive a living stipend, health insurance during service, and an education award upon completion of their term of service. CANI Corps members serve in several different program areas and attend monthly trainings. During these trainings, professionals from the community are brought in to present and interact with members on topics such as CPR/First Aid, crisis prevention, inclusion and accessibility, leadership, management, logic models, actions plans, and goal setting.



So far, the team of 2013 has recruited 253 volunteers and made 3,307 impressions on members of the community. The members have done this through four areas they serve in: Head Start, Covering Kids & Families, Community & Economic Development, and Human Resources/Development.

Community Action Poverty Simulation

The Community Action Poverty Simulation was designed and created by the Missouri Association for Community Action but is a prominent teaching tool used here at CANI. Participants are assigned a role, such as an unemployed single mother of two children, in which they have to attempt to make ends meet at the end of a month. The simulation's goal is to create a greater understanding of the issues of poverty by having these participants live a month in the shoes of those who struggle to get by.

In 2010, CANI began conducting poverty simulations and is continuing to bring awareness to Northeast Indiana. Three poverty simulations were held in 2013 and with more scheduled for 2014.



CANI Night at the Mad Ants

Over 369 program participants, staff, and board members attended CANI Night at the Mad Ants on March 1. The event's purpose is to bring a greater awareness to the public about all the programs that CANI offers while giving families a night to enjoy at a D-League basketball game.

CANI Golf

On June 19, 2013, 86 golfers aimed to get a hole in one to compete against poverty at our annual CANI Golf fundraising event. For the third year in a row, Do It Best Corp was our Event Sponsor. Several other area business and organizations golfed for the cause. Collectively, \$23,135 was raised to support CANI's efforts and mission to fight poverty and build hope in Northeast Indiana.



Hopewell Pointe Christmas Adoption



In December, CANI staff and volunteers adopted 23 families from the Hopewell Pointe subdivision in Waynedale for the holiday season. An estimated \$2,000 was given through either monetary donations or personal "adoptions" of the families. The gifts were distributed to each family's home by Santa and his helpers.

Thank You

The agency depends on support from the community in the form of grants, cash, and in-kind gifts. We would like to thank all those who gave to CANI in 2013:

Private Foundations/Grants

Hero (\$10,000+)
 Community Foundation of Greater Fort Wayne
 English, Bonter, Mitchell Foundation
 Elkhart General Hospital Community Health
 Foellinger Foundation
 K21 Foundation
 Lincoln Financial Foundation
 Lutheran Foundation
 Managed Health Services (MHS)
 MDWise
 Parkview Hospital Allen County Community Health Improvement Program
 Parkview Whitley Hospital
 United Way of Allen County
 United Way of Kosciusko

Visionary (\$1,000-\$9,999)

DeKalb County Community Foundation
 Indiana Criminal Justice Institute
 Kosciusko County Community Foundation
 Lake City Bank
 Noble County Community Foundation
 Parkview LaGrange Hospital
 PNC Foundation
 Steuben County Community Foundation
 Wells Community Foundation
 Whitley County Community Foundation
 Wells Fargo

Ambassador (\$500-\$999)

Fifth Third Bank

Cash Donors

Visionary (\$1,000-\$9,999)
 Pam Brookshire & family

Ronald Dierkes
 Do It Best Corp
 Doc Dancer
 Fort Wayne Mad Ants
 Mary Lee Freeze
 Frontier Communications
 Steve & Katie Hoffman & family
 Hylant Group
 Keller Development, Inc.
 Medical Mutual of Ohio
 Meijer
 Rogers Weatherization LLC
 Salin Bank & Trust Company
 UpState Recycling
 Jeff & Jennifer Vaughan

Ambassador (\$500-\$999)

3 Rivers Federal Credit Union
 Sherry Early Aden & family
 Deanna Backman
 Beauchamp & McSpadden, Inc.
 Mr. & Mrs. David Bobilya
 Deb & Pat Brase
 Classic Café
 Tamara S. Dyer
 Mary & Michael Musson
 Michael O'Keefe
 Randall Properties, LLC
 Swiss Re America Holding Corporation

Guardian (\$250-\$499)

Peter Adams
 Trudy Adams
 AMO Office Supply
 Anonymous
 Barrett & McNagny
 Jay Brown
 Centier Bank
 Cigna
 Classic Graphics
 Genesis Technologies
 Richard & Susan Hall
 Mary Harris
 Dale Hubert

The Janitors Supply Co., Inc.
 Kiwanis Club of South Fort Wayne
 Karl Kostoff
 Larry McSpadden
 Metropolitan Title Co. Inc.
 Momper Insulation
 Suzon Motz
 Dawn Oetting
 Ottenweller Company, Inc.
 Pretzels, Inc.
 Mr. Leigh A Smith
 Snider & Associates, Inc.
 Sam & Darlene Starbuck
 Tower Bank
 John H. Wilson
 Wipfli LLP
 Ms. Jaci Worrick

Advocate (\$100-\$249)

AFP Northeast Indiana Chapter
 Charles & Kristina Anderson
 Anderson Automotive, LTD.
 Aon Foundation
 Karma & Todd Austin
 Madeleine Baker
 Lisa Boyer
 Caliente LLC
 Rex & Leslie Carper
 Lesa Cassel
 Barbara Cayce
 Andrea Dawkins
 James & Laura Dwire
 Sally & Ned Edington
 Monica Elam
 Fire Police City County Federal Credit Union
 Todd Fleetwood
 Dawn Gallaway
 Nikki Geiger
 Ed Gerardot
 Alexander Gust
 Representative Kathy Heuer
 Steven Leslie
 Dr. Jerry L. Mackel
 Irwin Mallin

John & Pat McCombs
 Tom & Helen Nill
 John A Omara
 Kelly Pautler
 Alisa J. Pearson, Esq.
 Ted & Kathy Rash
 Rehmann Financial
 Ms. Mary Arnold Schwartz
 Mike Slater
 Rick Smith
 Jared Snyder
 Pearlette Springer
 Michael Stamas
 Richard P. Teets, Jr.
 Thirteen Step House, Inc.
 Nick Todoran
 Jed Ullman
 Unitarian Universalist Congregation of Fort Wayne
 Verizon Foundation
 Paige Wilkins
 William C. Weber & Associates, Inc.

Friend (\$1-\$99)

Chip Adams
 Edward Allen
 Gregory Averill
 Elizabeth Baddour
 Baker Street Office Furniture
 Tom Barfell
 Shannon L. Bearman
 Danelle Biberstine
 Donna Biberstine
 Phyllis A. Borg
 Daniel J Borgmann
 Jane Bowers
 Tammy Brandt
 Brenda L Brown
 Tracy & Alex Choka
 Ron Clark
 Laura Comstock
 Julie Creek
 Jill & Andy Downs
 Daniel Dwire
 Thomas & Nancy Dwire
 James Federoff

Friend (\$1-\$99) cont.

Carla Fields
 Christina Fiet
 Breann Fink
 Jill Fisher
 Gary Furst
 Larry and Judith Gerardot
 Jerry Giesler
 Christina Glaze
 Melissa Glaze
 Paul & Tauna Griffith
 Dorothy Hagan
 Randy Harding
 Derrick Hayes
 Jerome F Henry
 Carol Herndon
 Ethan, Dylan & Mason Hoffman
 Maurice & Luanne Hoffman
 Mike Hoffman
 Gary Hoffmann
 Bill Howard
 Jerry W. Howard
 Peter Iadicola
 Tony Jeffers
 Andrea Jones
 Cindy Joyner
 Larry & Jan Keller
 Mike King
 Ashley Kostelnik
 Gina Kostoff
 Ashley Kostelnik
 Spiro & Anne Kostoff
 Kuhl & Grant LLP
 Carol Lawton
 Karen Leeker
 Joni Lehman
 Robert & Sandra Lemon
 Cecelia Lockner
 Margaret A Machlan
 Shawn Mahady
 Bessie Makris
 Maria Maley
 Steve Markley
 Bobbi Mayne
 Michal Mazur
 Nancy McAfee
 Regina McLinden
 Deborah A McMahan
 Mid-States Electric, Inc.

Bob Mosser
 Fey Fey Moussou
 James E. Nill
 Carla & Lonnie Nunez
 Quent Ondricek
 Mary K. Osheskie
 Jason Pearson
 Suzanna Pearson
 John & Susie Peirce
 Mary Jo Peters
 Jason Petersen
 Thomas & Carol Robison
 Ruby Tuesday
 Charlotte Savieo
 Jessica Scheurich
 Matthew Schiebel
 Gary Snow
 Molly Spake
 Scott & Susan Sproul
 Tina Squires
 Charles Staeven
 Lucie M. Staggs
 Carrie Starks
 Dan Starr
 Betty E Stein
 Stein Advertising
 Rick & Teresa Stevens
 Robert N Taylor
 Leeann F Thompson
 Kody R Tinnel
 Courtney Tritch
 Nicole Turner-Ridley
 Dennis & Anne Ulman
 Lisa Updike
 Theresa Walker
 Dr. Linda J. Wark
 Suzanne & Jeffrey Weldon
 Bruce Whitman
 Toni Widman
 Teresa Wilhelm
 Alfred Zacher
 Misty Zent

In-Kind Donors

Hero (\$10,000+)

Disorderly Bear Den of Good Bears of the World
 WANE-TV 15

Visionary (\$1,000-\$9,999)

H.A.N.D.S Foundation
 New American Youth Ballet
 Parkview Health Nutrition Services
 St. Henry Catholic Church

Ambassador (\$500-\$999)

Masters of Cosmetology College
 Miller Heating, Air Conditioning, Geothermal
 PFG- Customized Indiana
 Stucky Brothers

Guardian (\$250-\$499)

Anthis Career Center
 Fort Wayne Automotive Solutions
 HQ Entertainment
 Kittle's Furniture
 Paw Paw Lay
 Noble Hawk Golf Links
 Peg Perego

Advocate (\$100-\$249)

Julia Bridges
 Brookwood Golf Club
 Coyote Creek Golf Club
 Reverend Dan Durkin
 Fort Wayne Urban Enterprise Association
 Alejandra Garza
 Nikki Geiger
 Deb Hartman
 Indiana Stamp
 Margie Kallenback
 Constantine Nichols
 Purdue University Extension
 Riegel's Pipe & Tobacco

Friend (\$1-\$99)

Ryan Allen
 Kira Banda
 Chanelle Barnes
 Bobick's
 Latosha Braster
 The Cake Lady LLC
 Cameo Day Spa
 Cap n' Cork

Carmike Cinema
 Chestnut Hills
 Chinese Buffet
 Club Soda
 Joleine Cordova
 Donald Ross Golf Club
 Mae Durden
 Linda K. Emrah
 Elizabeth Ensley
 Fort Wayne Parks & Recreation
 Christina Gillespie
 Latasha Hale
 Jessica Harter
 Lisa Hatcher
 Annie Henderson
 Inventure Group
 JK O'Donnell's
 Karen & Alicia Jones
 Gus Kinnie
 Lakeside Golf & Bowling
 Lassus Bros. Oil, Inc.
 Bobby McBride
 Jamie Miller
 Roger Mitchell
 Cheryl Munson
 Nexus Darlington Holiday Warehouse
 Michael Papaik
 Suzanne Pearson
 Sean Poindexter
 Jordan Redding
 Renaissance Pointe YMCA
 Parvielle Riggins
 Save-a-lot
 Sonja Scherrer
 Scott A Sproat
 Darlene Starbuck
 Rebecca Thomas
 Brandy Torres
 Colleen Washington
 Chrystal Wells
 Trudy Westfield
 Whispering Creek Golf Club
 Martha Williams
 Stephanie Li Wozniak
 Marla Yoder
 Misty Zent

Financial Summary for Annual Report 11/1/2012 - 10/31/2013

Revenue

Government Grants	16,341,508
Corporate Revenue	23,642
Foundation Revenue	210,737
United Way Revenue	196,364
Individual Donations	23,261
Investment Income	100,450
Fee for Service	124,626
Other Income	569,401
In-Kind Contributions	1,150,424
Total Revenue	18,740,413

Expenses

Personnel	6,406,894
Consultants & Contract Labor	1,309,331
Travel	297,184
Occupancy	595,572
Depreciation	133,431
Minor Equipment	2,705
Client Assistance	5,923,423
Material & Supplies	911,342
Telephone & Postage	153,157
Other	340,342
Shared Costs	1,507,152
In-Kind Expenses	1,150,424
Total Expenses	18,730,957

Net Assets

Change in Net Assets	9,456
Net Assets - Beginning of Year	3,819,446
Net Assets - End of Year	3,828,902



FIGHTING POVERTY

Building Hope

"It is wonderful to see programs like CANI offer to reach out on all levels and areas of life. This agency assists in making families and all lives better. It is one of a kind."



-CANI Participant

Yes, I would like to give to CANI so I can help fight poverty and build hope!

Name _____ Phone number _____

Address _____ City _____ State _____ ZIP _____

Email address _____

_____ \$10 _____ \$25 _____ \$50 _____ \$100 _____ Other

Your name will be published in CANI's annual report and newsletters.

I would like my gift to go toward CANI's Endowment, (for gifts of \$50 or more.) Contact Jennifer Renner at (260) 399-4103 for more information.

CANI *Fighting Poverty. Building Hope.*
COMMUNITY ACTION OF NORTHEAST INDIANA

Please mail this completed form to:
CANI
PO Box 10570
Fort Wayne, IN 46853-0570
Or you may donate online at www.canihelp.org.